



Community &  
Voluntary Services  
cheshire east

Funded by and working in support of the  
Cheshire East voluntary community

# CVS Annual Report

Summary of figures - 2020/2021

## Group Support

Over the past year we have supported

**388**

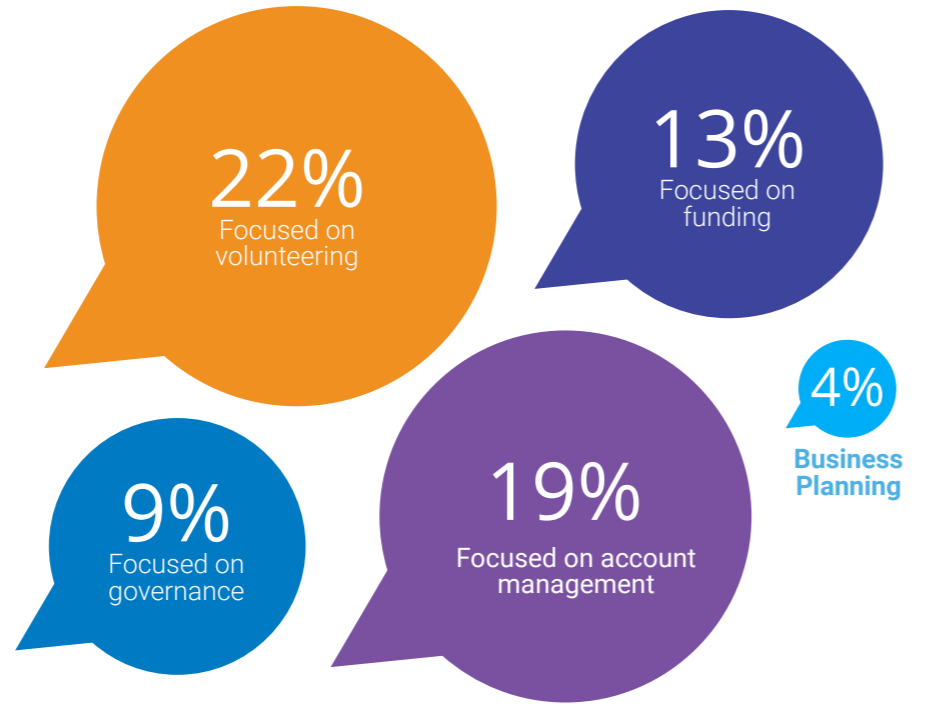
organisations with...

**1149**

advice sessions, that's...

**5**

every working day!



Other support areas included (but not limited to) Project Management, Partnership Development, Networking and Property.

## Training & Networks

**376** people

from **128** organisations attended CVS training sessions on topics such as, monitoring and evaluation, and safeguarding. A **45% increase** over last year.



## Communications

**2597** eBulletin Your Inbox

**2597** people actively receive our eBulletin and get a regular digest of all things VCFS in Cheshire East straight to their inbox.

**42,103** visitors to our website **36% up**

Our website serves as a hub of resources, information and volunteer recruitment for the community.

Overall **539** people from **258** organisations accessed the training and network programme which aims to enable staff and volunteers from the VCFS to learn, connect and act.

During the year we delivered **116** training or network events. A **significant increase from 51** during 2019-2020.

Due to COVID we recognised the need to regularly share information and provide a space for people to link to others. We delivered a weekly session (Thursday Thoughts) which provided an overview of the ever-changing guidance during the pandemic.

We run **10** sector networks

- Crewe VCFS
- Volunteer Managers
- Trustees
- Chief Executives
- Fundraising
- Marketing Network
- Food
- Community Transport
- Information & Advice
- VCFS Collective

Connecting **755** people through meetings, workshops and digital communication.

2022 will see an online networking space to added to our website.

## Volunteering



**CVS Cheshire East Volunteering Hub**

**146**

new volunteer opportunities advertised.

**72**

organisations advertised opportunities.

**461**

new volunteer registrations.

**71%**

of opportunities received an application.

**61%**

of new registrations applied for opportunities.

During 2020-2021 the demand for the service fell drastically as organisations had to limit their services.

## Funding Support



**64** organisations supported with...

Supporting organisations with funding bids remains a high priority for CVS during 2021-2022

**115** funding bids worth...

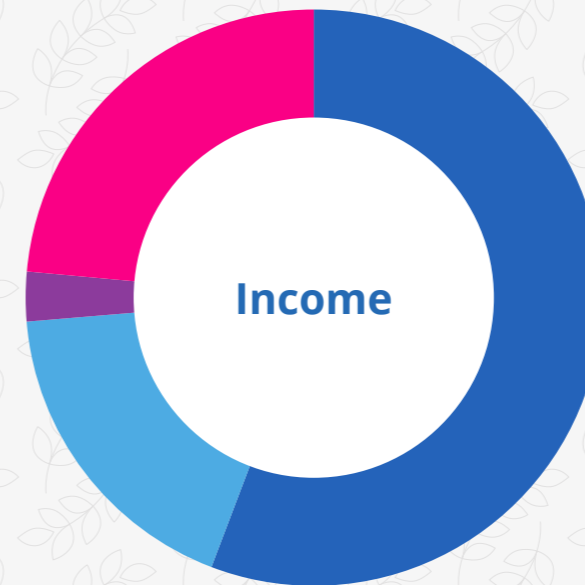
**✓67%** of the bids CVS supported were successfully awarded.

**£1.7million**

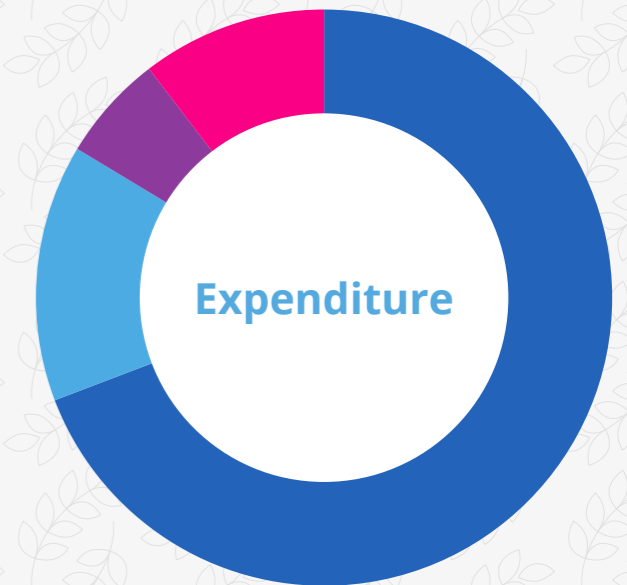
**£683,515** has been brought into Cheshire East organisations through CVS support.

Bids were submitted to **26** different funding bodies/programmes.

## Finances



56% £206,738 Grants  
18% £65,758 Contracts  
3% £10,430 Membership Fees  
24% £87,011 Trading and Donations  
**£369,937 Total Income**



69% £272,709 Salaries  
14% £56,361 Activities  
6% £24,579 Running Cost  
10% £39,844 Crewe Refurbishments  
**£393,493 Total Expenditure**

**Funded by and working in support of  
the Cheshire East voluntary community**

[www.cvsce.org.uk](http://www.cvsce.org.uk)

[enquiries@cvsce.org.uk](mailto:enquiries@cvsce.org.uk)  
01270 763 100

1a Gatefield Street  
Crewe  
Cheshire CW1 2JP